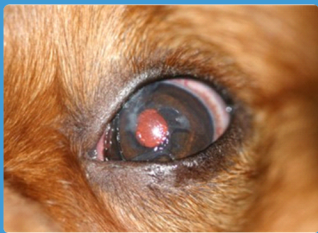


New RVC research shows certain dog breeds are more prone to keratoconjunctivitis sicca¹

Vetnurse, 17th June 2021



New research from the Royal Veterinary College (RVC) has revealed that flat-faced dogs & spaniels, amongst others, are more prone to keratoconjunctivitis sicca (KCS), aka 'dry eye'. The study was led by the RVC's Vet Compass Programme & is the largest study which included 363,898 dogs & found that one in every 250 dogs overall is affected by the condition, but certain breeds are especially prone.

The worst affected breeds were: American Cocker Spaniel (5.90%), West Highland White Terrier (2.21%), Lhasa Apso (1.86%), English Bulldog (1.82%), English Bull Terrier (1.65%), & English Cocker Spaniel (1.60%).

Other findings included:

- Two breeds showed reduced risk of dry eye compared with crossbred dogs: Labrador Retriever & Border Collie
- Brachycephalic breeds had 3.63 times the risk of dry eye compared with mesocephalic breeds
- Dogs in lower body weight groups had higher risk of dry eye: dogs weighing 10.0 - < 20.0 kg had 5.49 times the risk compared with dogs weighing 30.0 - < 40.0 kg.

The authors of the study have recommended that vets help reduce the frequency & impact of KCS by testing for the adequacy of tear production as part of the annual physical examination of all dogs but especially for the list of predisposed breeds as they approach advanced age.

The Global Pet Care Market is expected to grow by \$ 48.94 billion²

Globenewswire, June 2021

The Global Pet Care Market is expected to grow by \$ 48.94 billion during 2021-2025, progressing at a CAGR of over 5% during the forecast period. The market is driven by the shifting preference toward natural and organic pet care products, an increase in the number of people owning pets and increased spending on pets and the availability of wide range of fashionable and multifunctional pet furniture. In addition, shifting preference toward natural and organic pet care products is anticipated to boost the growth of the market as well.

WSAVA Global Community Congress 2021³

ONE COMMUNITY. ONE CARE. ONE VOICE.

WSAVA Global Community Congress will take place online from 13-15 November 2021. WSAVA 2021 will be a unique world Congress, focusing on the work the WSAVA committees, guidelines groups, partners and worldwide community do around the world. The WSAVA World Congress is an opportunity for global veterinary community to come together to learn, share ideas and to forge relationships with colleagues from around the world.



STUDY

10th Congress of The European Society of Veterinary clinical Pathology, Barcelona, 2008.

A dietary nucleotide formula improves the immune status of dogs receiving a chemotherapy treatment

Evangelio Sanchez E., Borda E., Tecles Vicente F., Martínez-Puig D., Ceron Madrigal J.J., Chetrit C.

OBJECTIVES

1. To assess the efficacy of Impromune administration in dogs receiving chemotherapy
2. Evaluate effects of Nucleoforce Dogs® (Bioiberica, Spain) +/- AHCC on cellular immunity (lymphocytes proliferation and lymphocytes subpopulations)
3. Evaluate effects of Nucleoforce Dogs® +/- AHCC on humoral immunity (Ig levels)

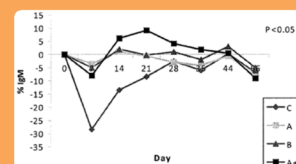
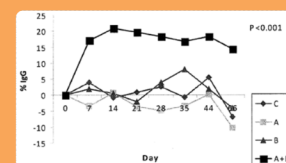
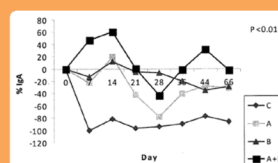
METHODS

18 beagle dogs divided into 4 groups: A) Nucleoforce®, B) AHCC, C) Control D) Nucleoforce® + AHCC

- Day 30: Single oral dose of Iomustine (70mg/m²) & cyclophosphamide (180mg/m²)
- Animals monitored daily

RESULTS

- Diarrhea & depression day 37: 50% dogs in group C, 33% in group A and B and 0% in group A+B
- B cells % ↓ in all groups on day 37; then ↑ in A+B, but remained low in group C
- Lymphocyte proliferation index higher for group A+B
- Higher IgA, IgG and IgM levels with the combination



CONCLUSION

Dietary supplementation with Nucleoforce® + AHCC improved immune response capacity of dogs after a chemotherapy treatment

IM PROMUNE®

FORMULA
PATENTED
US3878.9
OF AHCC & NUCLEOTIDES



Presentation: 200 tablets in a box
(20 strips of 10 tablets each)

EACH TABLET CONTAINS

Nucleoforce®: 585 mg
AHCC: 315 mg

Dose: <10kg-1/2 tab,
10-25kg-1tab,
26-40 kg- 1&1/2 tab,
>40 kg- 2 tabs