

## GLOBAL NEWS

### Pets' impact on human gut microbiome to be explored<sup>1</sup>

VPN, December 1<sup>st</sup> 2021



A new HABRI-funded study could further support the benefits of contact between older adults and companion animals. Researchers hypothesize the gut microbiomes of owners and their pets will resemble each other prior to the course of antibiotics, diverge during the disruption phase, then steadily converge during the recovery phase. Antibiotics disrupt the native gut microbiome, HABRI reports,

which can result in adverse outcomes, ranging from mild diarrhea to severe "C. diff" (Clostridioides difficile) infection.

### WSAVA Survey highlights urgent need for Global Veterinary Oncology education<sup>2</sup>

WSAVA, 29<sup>th</sup> November 2021

Veterinary professionals globally rate their knowledge of oncology at just five out of ten, according to survey from World Small Animal Veterinary Association (WSAVA) Oncology Working Group (WOW). Almost 2,000 veterinary professionals from around the world, 95% of them veterinarians, completed the survey in ten languages, during September and October 2021. Respondents were also asked to rank the most common tumor types seen in their practice. The most common answer was mammary tumor (81%); followed by skin tumor 75%; abdominal tumor 40%, malignant lymphoma 39%, and other tumors 5%. Surgery was the most common therapy used in private practice at 55%; followed by surgery and adjuvant therapy in 30% of cases; chemotherapy in 7% and palliative care in 4%. Immediate euthanasia was recommended in 1% of cases. While chemotherapy is only currently used by 7% of respondents, when asked which educational resources would be most valuable to them, chemotherapy protocols were requested by 82%.



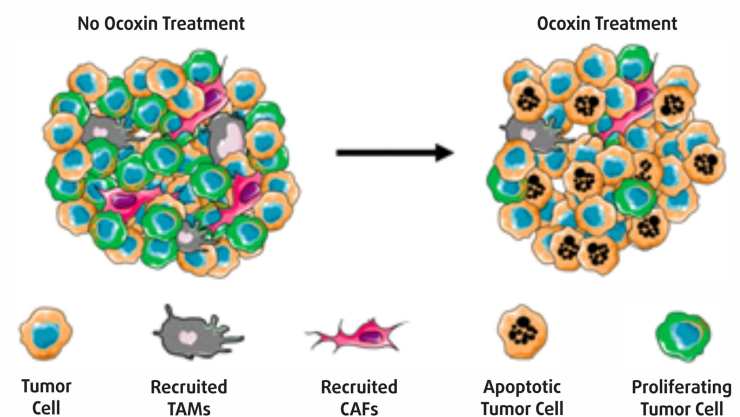
### Most dog breeds highly inbred<sup>3</sup>

Science Daily, December 2<sup>nd</sup> 2021

Dog breeds are often recognized for distinctive traits -- the short legs of a dachshund, wrinkled face of a pug, spotted coat of a Dalmatian. Unfortunately, the genetics that give various breeds their particular attributes are often the result of inbreeding. In a recent study published in Canine Medicine and Genetics, an international team of researchers led by University of California, Davis, veterinary geneticist Danika Bannasch show that the majority of canine breeds are highly inbred, contributing to an increase in disease and health care costs throughout their lifespan.

## Ocoxin as a complement to first line treatments in cancer (International Journal of Medical Sciences, 2021)

Chemotherapy and radiotherapy are the most frequent treatment for patients suffering from malignant progression of cancer. Even though new treatments are now being implemented, administration of these chemotherapeutic agents remains as the first line option in many tumor types. However, the secondary effects of these compounds represent one of the main reasons cancer patients lose life quality during disease progression. Recent data suggests that Ocoxin, a plant extract and natural compound based nutritional complement rich in antioxidants and anti-inflammatory mediators exerts a positive effect in patients receiving chemotherapy and radiotherapy. This mixture attenuates the chemotherapy and radiotherapy-related side effects such as radiation-induced skin burns and mucositis, chemotherapy-related diarrhea, hepatic toxicity and blood-infection. Moreover, it has been proven to be effective as anticancer agent in different tumor models both in vitro and in vivo, potentiating the cytotoxic effect of other several chemotherapy compounds. Ocoxin impairs tumor development through a wide spectrum of antitumor effects. Ocoxin regulated the tumor microenvironment, by reducing the recruitment of different pro-tumoral cells and making the tumor more vulnerable and sensitive for CT. To improve cancer patient's life quality represents a very significant positive effect of Ocoxin. Ocoxin seems to prolong patient's life expectancy in combination with routine CT regimen.



Ocoxin modulates the tumor microenvironment. Ocoxin treatment reduces the recruitment of tumor-promoting macrophages & fibroblasts into the tumor. Moreover, Ocoxin impairs reduces cell proliferation & increases apoptotic cancer cell death, leading to impaired tumor growth.



**OCOXIN**

**A complementary therapy in cancer treatment**

#### Dosage

DOGS and CATS : 1 ml per 5 kg of body weight every 12 hrs.