

GLOBAL NEWS

Research reveals need for greater knowledge about undesirable behaviour in dogs¹

Vet Times, January 13th 2022



A team at the RVC has carried out the largest study of its kind into the use of drug therapy for behaviours including anxiousness, dementia-like behaviour changes and nervousness aggression. Findings showed the three breeds at highest risk of being prescribed a drug to manage undesirable behaviours were the toy poodle, Tibetan terrier and shih-tzu. The RVC conducted the study using its analytics programme VetCompass, looking at the clinical records of 103,597 dogs. From this, the researchers identified 404 dogs had

received at least one drug to treat an undesirable behaviour. Breeds of a smaller body size overall were no more likely to require medication than larger breeds, but increased age and being male heightened the risk of dogs being prescribed drugs. Among other key findings in the survey, undesirable behaviours requiring modifying drugs included anxiousness (11.9%), dementia-like behaviour changes (10.4%) and nervous aggression (8.7%). Acepromazine maleate, or ACP, was prescribed in 32.1% of cases, diazepam (Valium) in 20.6% and propentofylline in 12.9%.

New research in the fight against canine epilepsy²

Vetsurgeon, January 7th 2022

Linnaeus has joined forces with researchers from the Kennel Club Genetics Centre to conduct a study which aims to identify DNA variants that may increase dogs' susceptibility to idiopathic epilepsy. Canine idiopathic epilepsy is a disease that is common in many breeds of dog and can significantly impact the quality of life of both affected dogs and their owners. However, there is limited knowledge concerning the role of genetic factors in susceptibility to the disease in most breeds. The overarching aim of this large-scale collaborative study is to identify the genetic factors contributing to the risk of developing idiopathic epilepsy as this could help develop tools to lower the incidence of the condition in future generations.

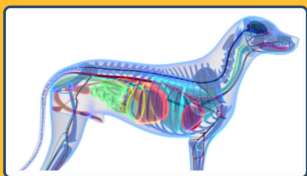
Canine lymphoma tablets OKed by FDA³

VPN, January 13th 2022

Dogs diagnosed with lymphoma can now benefit from newly approved treatment. The product, verdinexor tablets, is the first prescription treatment for the condition available in tablet form. It works to prevent certain proteins from leaving the nucleus of cancer cells, thereby allowing these proteins to control the growth and prevent the spread of cancerous cells in dogs. It is the first oral treatment for dogs with lymphoma to receive the agency's green light.

An integrative approach to maintaining a healthy gut

DVM360, January 6th 2022



The role of the gastrointestinal tract in optimal function of an animal's body is complex. Maximizing the function of the GI tract can help improve the overall health of patients. According to the principles of integrative medicine, the digestive tract is more than

simply a means of deriving nourishment. It also plays a significant role in the immune system and is considered the largest organ of this system. This creates a "paradoxical double role of both needing to optimally absorb necessary nutrients, while at the same time excluding toxins, pathogens, and antigens. The GI tract has several defenses against pathogens, which include the following: Barrier function, Secretory function, Digestive function, Immune defences. Treating and preventing a "leaky gut" involves a 4-part strategy that Silver refers to as the 4-R program: remove, replace, repair, and reinoculate. A multimodal approach to improving gastrointestinal barrier function in veterinary patients will strengthen digestive function, the immune system, and the body as a whole. Understanding the role of the GI tract in maintaining systemic health is the first step in implementing an integrative approach to GI health. Treatments that remove toxins, replace normal missing digestive factors, repair the damaged intestinal mucosa, and reinoculate the normal flora should be selected from a combination of evidence-based traditional medical therapies and nutraceuticals.

SynFOSium

Presentation: 10x1x10 capsules

Dosage:
1 capsule per day



Entero-CHRONIC

Presentation: 60 sachets of 4 gm

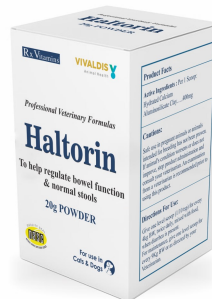
Dosage:
upto 5kg 1/2 sachet,
5-15 kg 1 sachet,
16-35 kg 2 sachets,
Above 35 kg 3 sachets.
Once daily dosing schedule for 15 days



Haltorin

Presentation: 20gm powder

Dosage:
Can be mixed with food 1 level scoop (1/10 tsp) for every 4kg BW BID when diarrhea is present.
For maintenance, 1 level scoop per 9kg BW



Stay connected with

[facebook.com/vivaldisanimalhealth](https://www.facebook.com/vivaldisanimalhealth) | [instagram.com/vivaldisanimalhealth](https://www.instagram.com/vivaldisanimalhealth) | [linkedin.com/company/vivaldisanimalhealth](https://www.linkedin.com/company/vivaldisanimalhealth)